

Colloque arbitres CDV 29

Présentation d'outils numériques

7 février 2026

Beat length

Pour « planter le décor »

Support

Parcours

09:11 4G 100

Class ILCA 6

Target Time 30m

Course Trapezoid

Beats 2

Interior Angle @ Mark 1 80 deg

Wind Speed 12.0 kn

Boats 17

Variant Reaching Finish Near Start

Rounding Inner

Course IF2

Beat Length 0.44 nmi

Start 108 m

Gate 42 m

Finish 50 m

Hide Preview

Temps cible

Bord final

« Tours »

Force du vent

Nombre de bateaux

Course

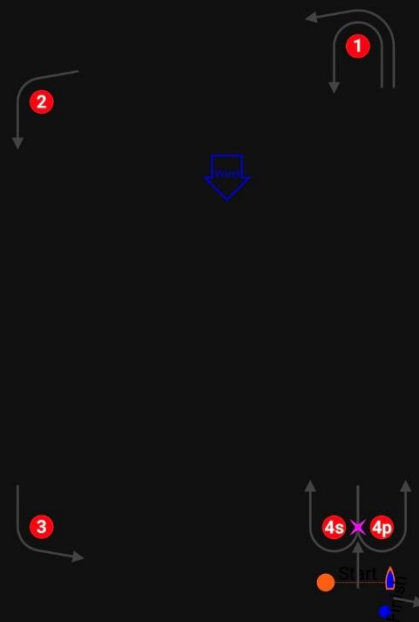
Beat Length

IF2

0.44 nmi

Start
108 mGate
42 mFinish
50 m

Hide Preview ^



Leg

Leg Time

Total

Start - 1

08:19

08:19

1 - 4s/4p

04:37

12:56

09:35 M A [] • 4G+ 99

Class
ILCA 6

Target Time
30m

Course
Trapezoid

Variant
Reaching
Finish Near
Start

Rounding
Inner

Beats

Interior Angle
@ Mark 1

Wind Speed

Boats

Course
IF2

Beat Length
0.44 nmi

Start
108 m

Gate
42 m

Finish
50 m

Hide Preview ^

1

- Reaching Finish
- Beat To Finish
- Beat To Start
- Reaching Finish Near Start



Type de bord final

Type de parcours



09:35 4G+ 99

Class
ILCA 6

Target Time 30m

Course Trapezoid Variant Reaching Rounding Inner

Windward/Leeward

Triangular

Trapezoid

Optimist















Boats 17

Course IF2 Beat Length 0.44 nmi

Start 108 m Gate 42 m Finish 50 m

Hide Preview

1

-  2.4mR
-  29er
-  420
-  470 MEN
-  470 MIXED
-  49er
-  49er FX WOMEN
-  Etchells
-  Finn
-  Formula Kite
-  ILCA 4
-  ILCA 6
-  ILCA 6 YOUTH
-  ILCA 7



30m

-

+

ariant
hing
Near
Start

Rounding
Inner

2

-

+

0 deg

-

+

.0 kn

-

+

17

-

+

Beat Length

0.44 nmi

Finish

50 m

W ^

1

09:36 M A [] • 4G+ 99

Class
ILCA 6

Target Time 30m - +

Course Trapezoid Variant Reaching Rounding Inner
Finish Near Start

Beats 2

Interior Angle 80 deg @ Mark 1

Wind Speed 12.0 kn - +

Boats 17 - +

Course IF2 Beat Length 0.44 nmi

Start 108 m Gate 42 m Finish 50 m

Hide Preview ^

1

Inner

Outer



Intérieur / extérieur

IRC/ORC 2 (beta)



J/70



J22



Mirror



Nacra 15



Nacra 17



Optimist



RS Feva



RS:X (Men)



RS:X (Women)



RS:X 8.5



SKUD

SPITFIRE



Sonar



Topper



30m

-

+

ariant
hing
Near
StartRounding
Inner

2

-

+

0 deg

-

+

.0 kn

-

+

17

-

+

Beat Length

0.44 nmi

Finish

50 m

w ^

1

Sail Grib

Pour ne pas « planter » les coureurs

SailGrib WR Free



SailGrib WR Free

Navigation, Routage, Météo,
Cartes Marines

Vous acceptez les [conditions d'utilisation](#).



Autres apps de SailGrib



SailGrib WA



SailGrib



SailGrib RS



Marée basse 01h49 1.39m



Marée haute 07h45 6.85m



Marée basse 14h11 1.54m



Marée haute 20h02 6.46m

84

79



Lat : 48°21.977'N
Lon: 004°26.432'W



D 165

Ar Viliñ Wenn

Moulin B.

Zone industrielle
portuaire

Brest

ACTION



REQUÊTE GRIB

OUVRIR UN GRIB

CRÉER UNE ROUTE

ROUTAGE

PRÉFÉRENCES



C 24





Lat : 48°21.977'N
Lon: 004°26.432'W



D 165

Ar Viliñ Wenn

Moulin B.

Zone industrielle
portuaire

Brest

ACTION



REQUÊTE GRIB

OUVRIR UN GRIB

CRÉER UNE ROUTE

ROUTAGE

PRÉFÉRENCES

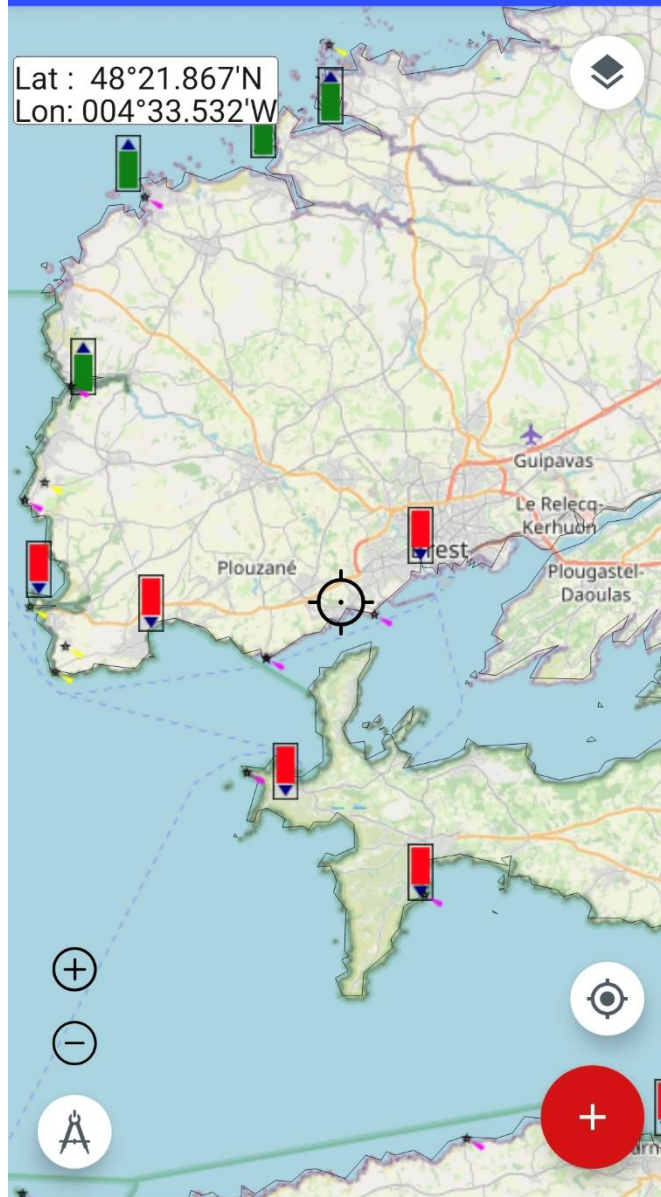


C 24



SailGrib WR Free

Lat : 48°21.867'N
Lon: 004°33.532'W





Lat : 48°21.758'N
Lon: 004°27.578'W



TERMINER

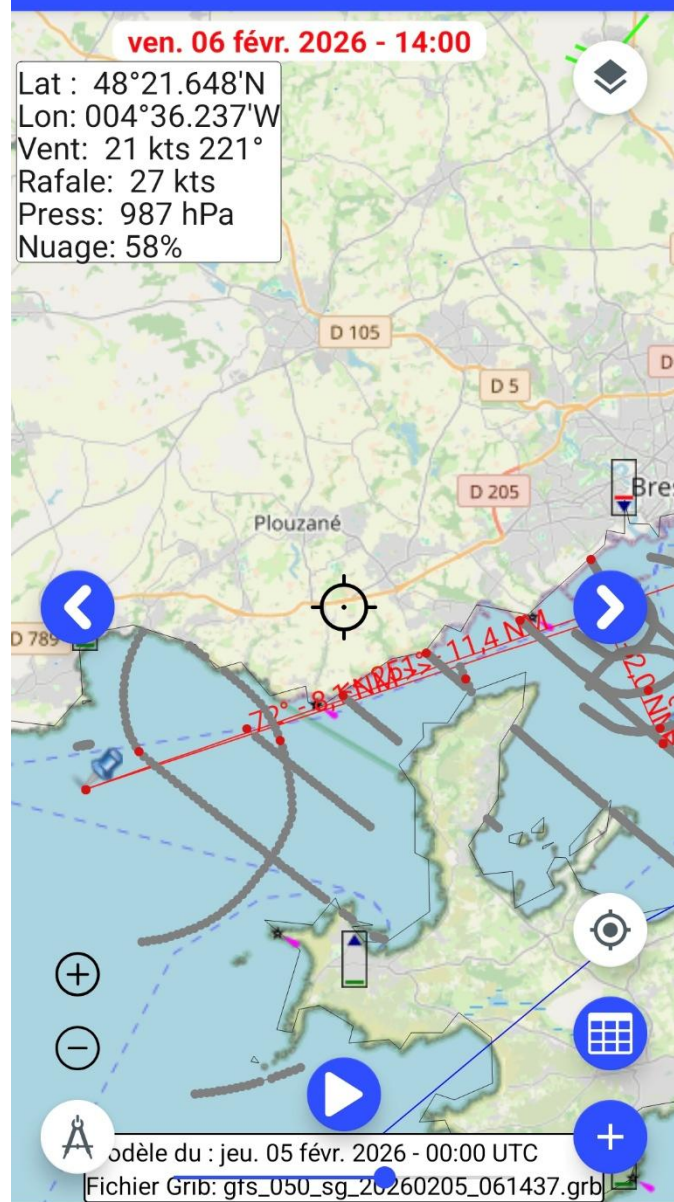
MODIFIER





ven. 06 févr. 2026 - 14:00

Lat : 48°21.648'N
Lon: 004°36.237'W
Vent: 21 kts 221°
Rafale: 27 kts
Press: 987 hPa
Nuage: 58%



Modèle du : jeu. 05 févr. 2026 - 00:00 UTC

[Fichier Grib: gfs_050_sg_20260205_061437.grb]

SailGrib WR Free

Lat : 48°21.977'N
Lon: 004°26.432'W

ACTION



REQUÊTE GRIB

OUVRIR UN GRIB

CRÉER UNE ROUTE

ROUTAGE

PRÉFÉRENCES



REQUÊTE GRIB

Taille estimée (compressée) : 5ko

Paramètres de la requête

Source: SailGrib

Source des fichiers grib

Modèle: gfs_050

Mis à jour à: 06:35 12:35 18:35 00:45 Heure locale

Pas de temps: 3 heures

Pas de temps en heures entre chaque prévision

Jours: 2

Nombre de jours de prévisions

Vent

Vent à 10m - toujours demandé



Pression

Pression au niveau de la mer



Précipitations

Précipitations accumulées par heure



Couverture nuageuse

Couverture nuageuse en %

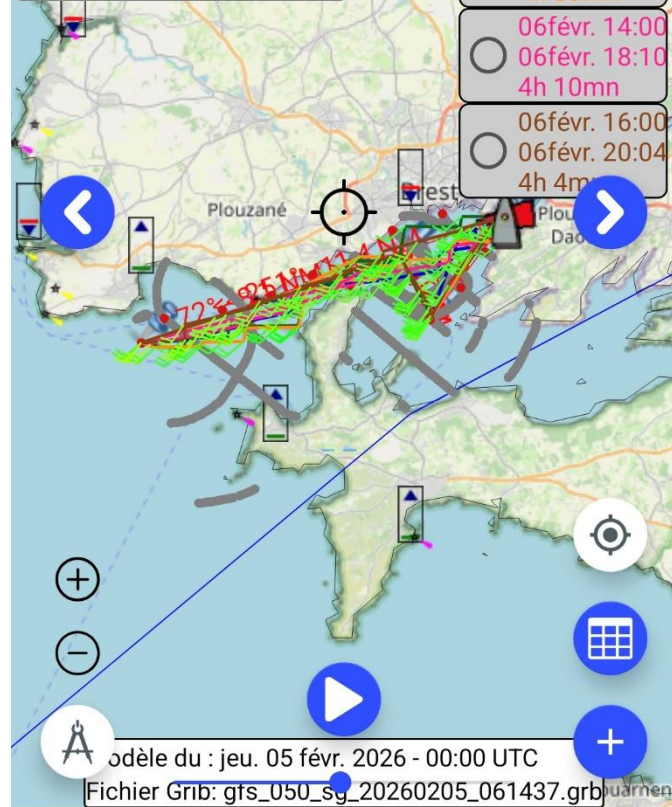




ven. 06 févr. 2026 - 14:00

Lat : 48°22.683'N
Lon: 004°25.778'W
Vent: 19 kts 221°
Rafale: 27 kts
Press: 987 hPa
Nuage: 69%
SOG/COG : 6,5 kts 261°
SWA: 40° sur babord
DTF: 25,3 nm
j109

- 06févr. 14:00
- ☒ 06févr. 17:33
3h 33mn
- 06févr. 08:00
- ☐ 06févr. 11:55
3h 55mn
- 06févr. 08:00
- ☐ 06févr. 12:32
4h 33mn
- 06févr. 14:00
- ☐ 06févr. 18:10
4h 10mn
- 06févr. 16:00
- ☐ 06févr. 20:04
4h 4mn



First 310 S : rating net Osiris 20 (coeff 0,8357)

J 109 : rating net Osiris 109 26 (coeff 0,9119)

Données purement indicatives.

Bateau	Heure départ	TR	TC (temps sur temps)
J109	08h00	3h55	3h34'17''
J109	14h00	3h33	3h14'13''
First 310S	08h00	4h01	3h21'24''
First 310S	14h00	3h39	3h03'

Aujourd'hui dans certaines
séries... mais très cher

Pour ne pas « se planter »

vakaros

RACESENSE ▾ ATLAS 2 ATLAS EDGE ACCESSORIES ▾
ABOUT ▾



France (EUR €) ▾



INSTRUMENTS

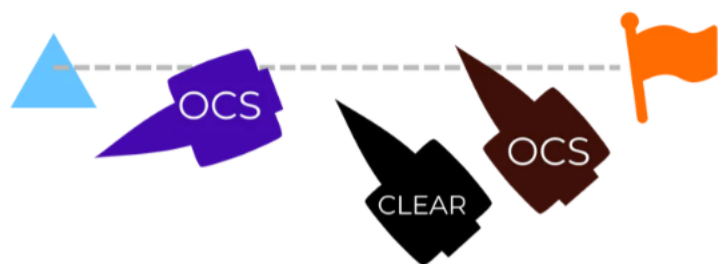
ATLAS FAMILY

RACE MANAGEMENT

EXPLORE RACESENSE

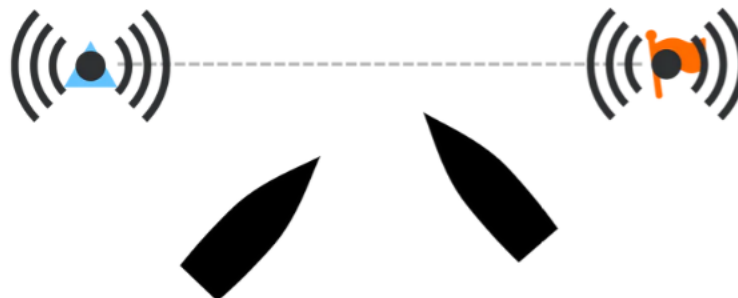
Hi there! Welcome to our chat! I'm happy to help.





OCS DETECTION

Let the Atlas 2's Real-Time Differential GNSS call the start, and stop waiting for slow hails, inaccurate OCS calls, and countless general recalls. Competitors are notified milliseconds after the start if they're over or not, so it's easier than ever to restart and get racing.



PINGING IS THE PAST

Live broadcast pings are ending the parade. Each Atlas 2 receives the position of each end of the line, live. So, when anchored marks swing or the RC anchor line stretches, your DTL value will update automatically.



LIVE TRACKING

Every RaceSense event supports live tracking - at no additional cost. Boats report their positions to nodes around the racecourse, which uploads data to view on our proprietary live viewer. Watch races live, or review afterwards.



1.5 Open

1.6 The Vakaros RaceSense system will be used by the Race Committee and the relevant information will be available to all boats.

1.7 The visual identification of boats infringing RRS 29 and RRS 30 by the Race Committee is replaced with the electronic identification by the Vakaros RaceSense system. This changes RRS 29.1, 30.1, 30.2, 30.3 and 30.4.

1.8 A set of instructions about the use of the electronic device will be posted on the Official Notice Board.

Merci pour votre attention